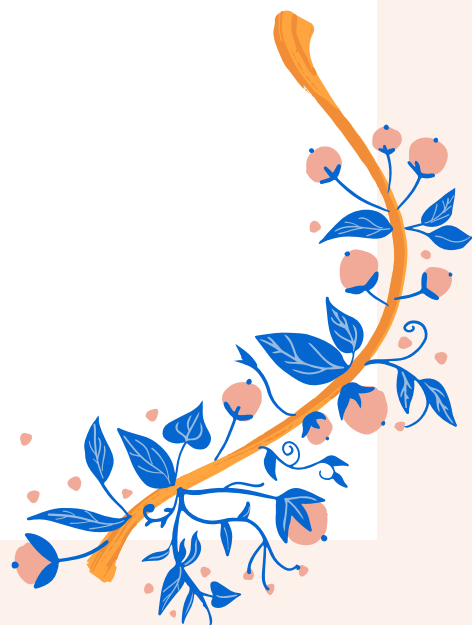


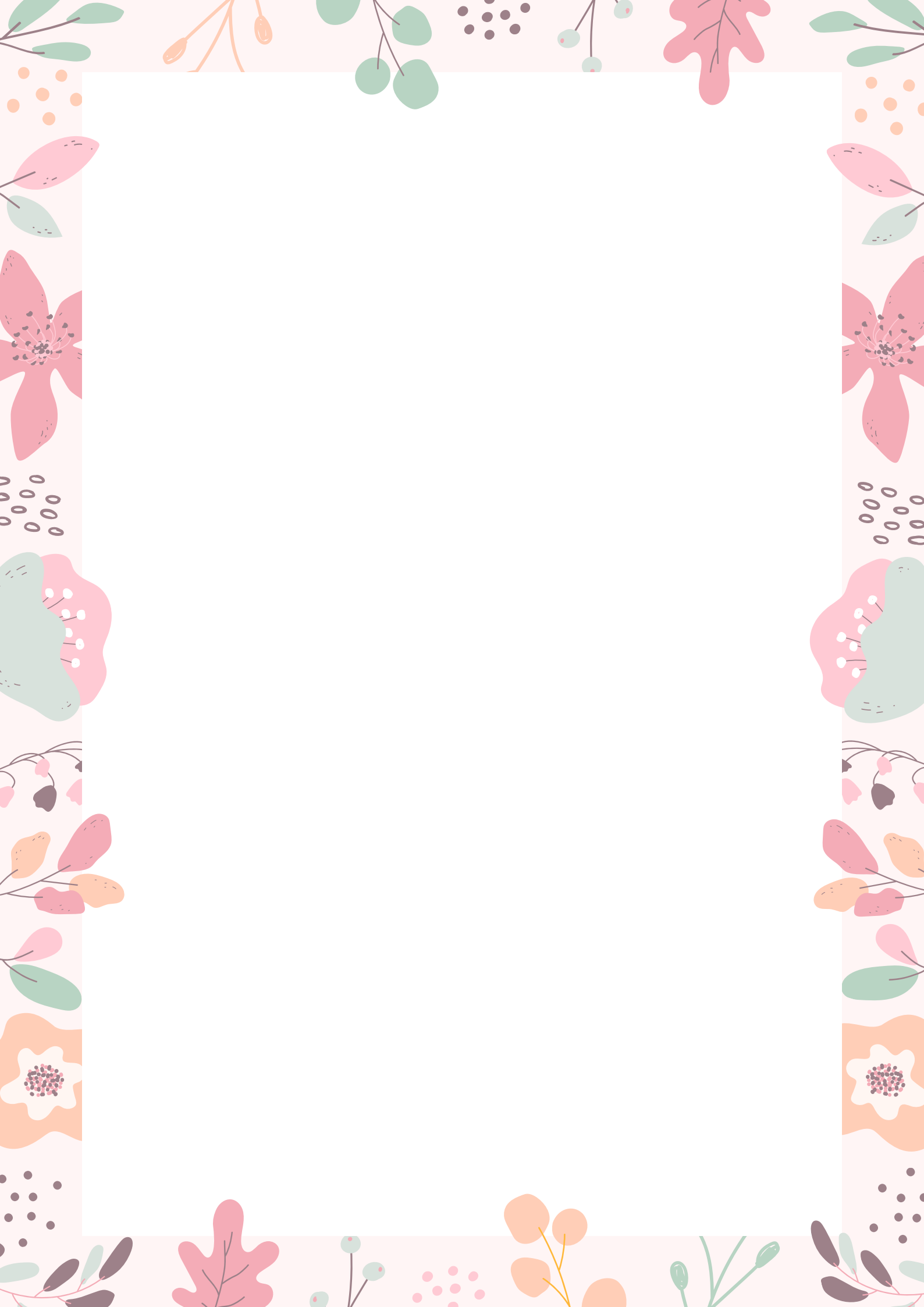
W
'O

JO
oi

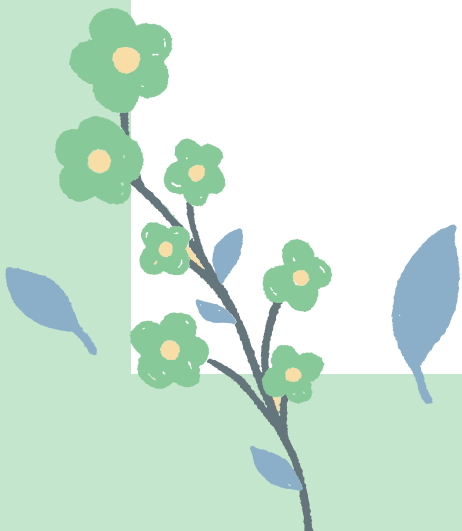
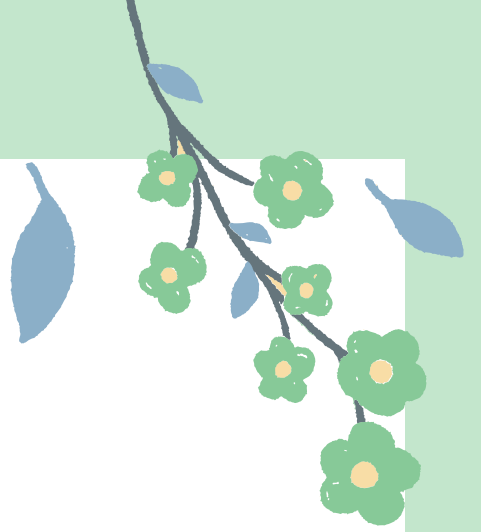
ot

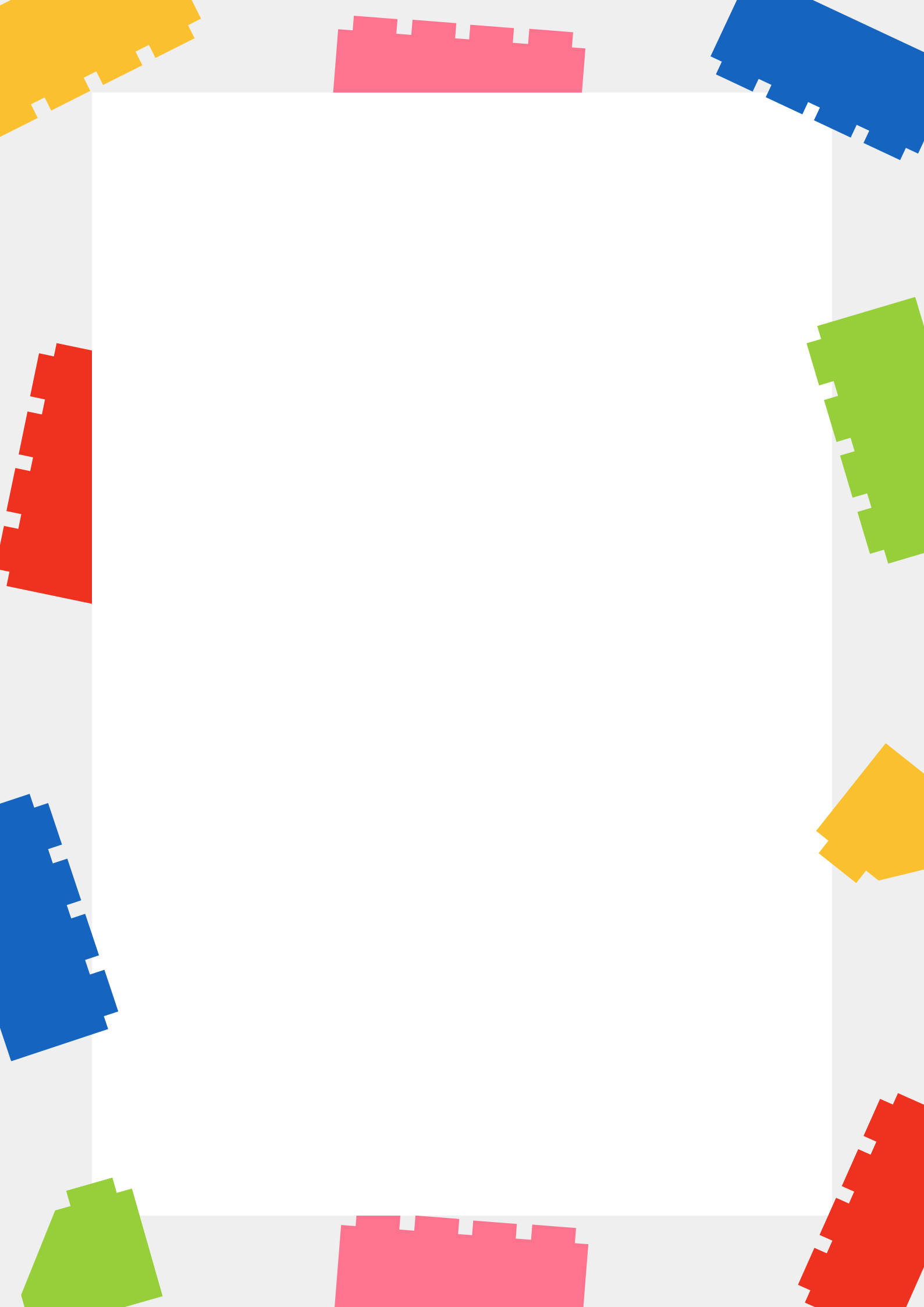
visited the Great Br

















the first two years of life. The first year of life is the most critical period for the development of the brain.

The second year of life is also a critical period for the development of the brain. The second year of life is the most critical period for the development of the brain.

The third year of life is also a critical period for the development of the brain. The third year of life is the most critical period for the development of the brain.

The fourth year of life is also a critical period for the development of the brain. The fourth year of life is the most critical period for the development of the brain.

The fifth year of life is also a critical period for the development of the brain. The fifth year of life is the most critical period for the development of the brain.

The sixth year of life is also a critical period for the development of the brain. The sixth year of life is the most critical period for the development of the brain.

The seventh year of life is also a critical period for the development of the brain. The seventh year of life is the most critical period for the development of the brain.

The eighth year of life is also a critical period for the development of the brain. The eighth year of life is the most critical period for the development of the brain.

The ninth year of life is also a critical period for the development of the brain. The ninth year of life is the most critical period for the development of the brain.

The tenth year of life is also a critical period for the development of the brain. The tenth year of life is the most critical period for the development of the brain.

The eleventh year of life is also a critical period for the development of the brain. The eleventh year of life is the most critical period for the development of the brain.

The twelfth year of life is also a critical period for the development of the brain. The twelfth year of life is the most critical period for the development of the brain.

The thirteenth year of life is also a critical period for the development of the brain. The thirteenth year of life is the most critical period for the development of the brain.

The fourteenth year of life is also a critical period for the development of the brain. The fourteenth year of life is the most critical period for the development of the brain.

The fifteenth year of life is also a critical period for the development of the brain. The fifteenth year of life is the most critical period for the development of the brain.

The sixteenth year of life is also a critical period for the development of the brain. The sixteenth year of life is the most critical period for the development of the brain.

The seventeenth year of life is also a critical period for the development of the brain. The seventeenth year of life is the most critical period for the development of the brain.

The eighteenth year of life is also a critical period for the development of the brain. The eighteenth year of life is the most critical period for the development of the brain.



